



Autumn Leaves (Solo)

©KAI ICHIKAWA

Sheet music for "Autumn Leaves (Solo)" in 4/4 time, featuring chords and melodic lines.

Chords: F7, E7, Am, Dm7, G7, Cmaj7, Fmaj7, Bm7b5, Am7, Ab7, Gm7, F#7.

Section A (Measures 5-8):

5 Dm7 G7 Cmaj7 Fmaj7

Section B (Measures 13-16):

13 Dm7 G7 Cmaj7 Fmaj7

Section C (Measures 21-24):

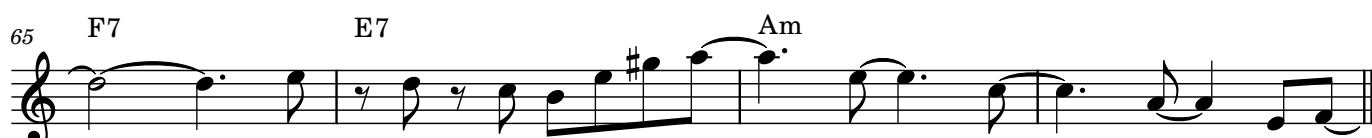
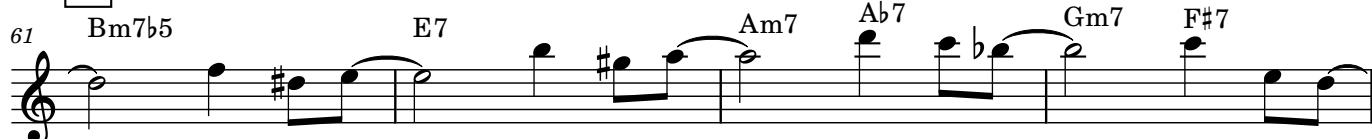
21 Bm7b5 E7 Am

Section D (Measures 29-32):

29 Bm7b5 E7 Am7 Ab7 Gm7 F#7

Section E (Measures 33-36):

33 F7 E7 Am

E**F****G****H****I**